

VERTISA COMPACT STEAM BOILERS

VERTISA VSG SERIES ELECTRICAL STEAM BOILERS

VERTISA ELECTRIC steam boilers are designed to provide fast, efficient, and economical steam for heating and process using special design corrosion resistant electrical heating elements.

The boiler controls automatically energize/de-energize steps of elements to maintain the desired steam pressure. All boilers comply to Pressure Equipment Directive (PED) 2014/68/EU and all electrical components are wired in accordance with the current Machinery Directive and safety requirements.

Each BOILER is insulated with insulation material with stainless steel sheet cover secured to the vessel, mounted on a full size structural steel base.

Small size, small capacity VERTISA Electric Steam Boilers are perfect for industries that require efficient, high quality steam in waste sterilization industry, laboratories, hospitals, computer rooms, pilot plants and for small intermittent, mid-steam consuming loads.





VERTISA ELECTRICAL STEAM BOILER TECHNICAL FEATURES



- Vertisa Steam BOILER is produced and equipped with state-of-art technology.
- It generates very fast and economic steam.
- It operates in 2-3-4-5-6 stages depending on capacity and full automatically.
- It generates heat as required (restricted to upper limit).
- Operation is very easy thanks to full automation control (PLC Control).
- It is steam-domed so that it is not affected from sudden steam extractions.
- Heat resistances are not harmed in the events of immediate need
- It is designed and manufactured according to the most possible negative circumstances and equipped with extraordinary safety chain.
Safety chain considers absence of water input of boiler.
- Since water volume is very small, it is possible to operate in locations occupied by persons.
- Steam temperature and all functions can be constantly monitored in advanced automation schedule.

TECHNICAL SPECIFICATIONS

MAIN BODY MATERIAL	P295GH PRESSURE VESSEL STEEL TO EN10028-2
FLANGE MATERIAL	P295GH PRESSURE VESSEL STEEL TO EN10028-2
BODY THICKNESS	15 MM
WORKING PRESSURE	6.5 BAR
TEST PRESSURE	10 BAR
HEATING ELEMENTS	15 – 50 KW
WATER TREATMENT	DESIGNED ACCORDING WATER QUALITY AVAILABLE
WATER LEVEL SENSOR	INCLUDED
PRESSURE SWITCH	INCLUDED
SAFETY OVER PRESSURE VALVE	INCLUDED
DRAINAGE VALVE	INCLUDED
WATER PUMP	INCLUDED
INSULATION COVER	STAINLESS STEEL 304L
INSULATION MATERIAL	ROCKWOOL (50 MM)



MEDICAL WASTE STERILIZATION SYSTEMS

VERTISA MEDICAL WASTE TECHNOLOGY, LLC

3956 Town Center Blvd #217

Orlando, Florida 32837. USA

TEL. +1 407-852-8277 | +1 407-255-8377 USA

FAX: +1 800-915-9512

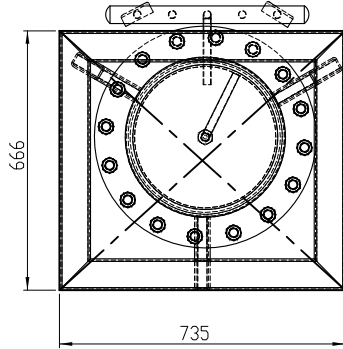
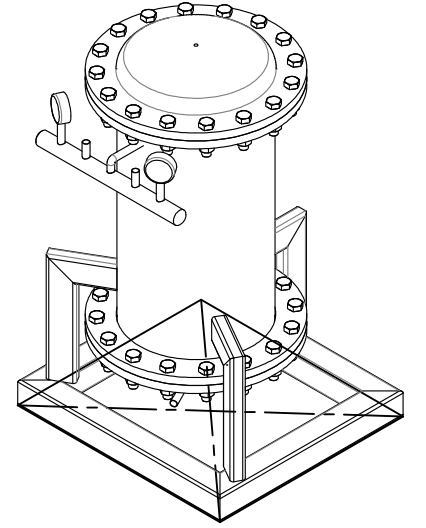
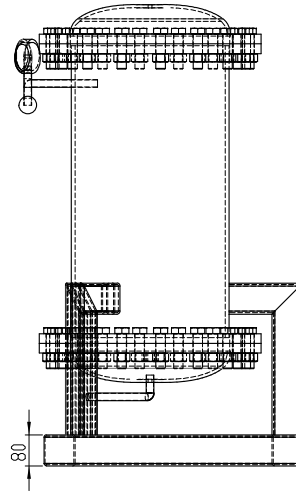
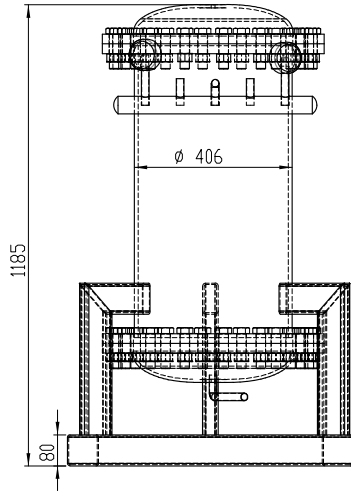
Email: Info@MedicalWasteTechnology.com

Website: www.MedicalWasteTechnology.com



PROMED®

MEDICAL WASTE STERILIZATION SYSTEMS



TEKNİK RESİM ÖLÇEKLENDİRMEYİN				BA'LİK	
AKS-BELİRTİLMEDİR SUREDE EDİTULAN MEYDİRE	BITİRME	KESKİN KEMARLARI PAHALAYIN VE KIRIN		VERTISA ÇEVRE TEKNOLOJİLERİ	
İSİM	İKCA	TARİH	MALZEME	RESİM NO	buhar kazanı montaj A3
ÇİZEN	Meke KÖNÜKÇÜ				
İNCELİ	Arman ÇİNGELİAT				
İNŞA	Meke KÖNÜKÇÜ	AĞIRLIK		ÖLÇEK/ÖLÇÜ	
				SAYFA 1 / 1	

VERTISA MEDICAL WASTE TECHNOLOGY, LLC

3956 Town Center Blvd #217

Orlando, Florida 32837. USA

TEL. +1 407-852-8277 | +1 407-255-8377 USA

FAX: +1 800-915-9512

Email: Info@MedicalWasteTechnology.com

Website: www.MedicalWasteTechnology.com